

TRADE CATALOGUE - 2022 UPDATE



NO MINIMUM ORDER · UK CARRIAGE PAID: £100

Welcome to Humblewood



One thing that the difficulties caused by the pandemic gave us, was the opportunity to take some time out to work on new products and expand popular ranges.

So following the successful launch of our lighting range in 2020, we've added two new designs, (p8) – **and now a further three for 2022!** (See supplement).

The **clock** range sees five new designs, plus an update to our popular, *It's Five-too* wall clock (p4) – **and another wall clock joins the range for 2022** (See supplement).



Bob, looking less than svelte, at a pre-Covid trade show

Three **mirror** designs also made an appearance (p11), and after proving popular in 2019/20, there are umpteen additions to the **kitchen & serving** range (p14 and the 2022 supplement).

Our fun-sized **Bertie stools** have an eye-catching new look, with the option of multi-colour Rainbow versions (p27).

Humblewood's style was developed by combining beautiful, sustainably-sourced, Ash hardwood from local timber yards, with our distinctive use of colour. But after a trial in 2021 we're now offering all items in unpainted **Oak** too (p20).

In all we have introduced 31 new designs, since early 2021 – shown in this catalogue plus those in the 2022 supplement.

Sadly, due to rising material costs (many clock and lighting parts have doubled in price, for example) we have had to increase some prices. However, our discount scheme continues as before.

We hope you like our new creations, and as always, welcome your feedback.

Wishing you every success in these uncertain times.

Bob, Eunice, Karen & Barney,
team Humblewood

See our 2022
Supplement for new
Lamp, Chopping Board
and Clock designs

contents

Clocks	4-7
Lighting	8-10
Mirrors	11
Vases	12-13
Kitchen & Serving	14-19
HumbleOak	20-21
Accessories	22-23
Smalls	24-25
Sit!	26-27
About us	28
Colours	29
Ordering & terms	30
Say hello	31
2022 SUPPLEMENT	33



We support Just A Card – a grassroots campaign on a mission to encourage people to buy from artists, makers, independent shops and small businesses by emphasising that all purchases however small, even 'Just A Card', are vital to the prosperity of independents.

We feel that we have a vested interest in our retailers' success, because without them we would simply not have a viable business of our own.

So as a small gesture of support for our lovely retailers we don't sell direct to the public under the Humblewood name.

You can find out more about Just a Card and get involved online at:

justacard.org | @Justacard | #justacard

Discount scheme
Orders between £250 and £449.99 will receive a 5% discount. While orders of £450 or more will benefit from a 10% discount.
Order values ex VAT.



clocks

UPDATED DESIGN!



ALL ITEMS ALSO AVAILABLE IN OAK see page 20



NEW CLOCK DESIGN FOR 2022 see 2022 supplement

All items are available in 22 colours & 3 metallics!



NEW

Ticker Time, heart-shaped wall clock
Size: 300 x 270 x 35 (inc hands) HW040

Off-the-Wall, wall / mantle clock
A clock with a split personality - it can either be hung on the wall or placed on the supplied stand. The 'pretendulum' gives a cheeky nod to the classic pendulum clock design.
Size: 190 x 115 x 30 HW029



Wonky Clock, mantle clock
Size: 120 x 38 x 80 HW009



clocks



NEW CLOCK DESIGN FOR 2022
see 2022 supplement

It's Five-too, wall clock
Mildly updated face and larger size.
Size: 340 x 35 (inc hands) HW011



UPDATED DESIGN!



A Quarter-too, wall clock
Size: 210 x 35 (inc hands) HW010

Batteries included with all clocks

NEW



Gran's, mantle clock
Size: 130 x 115 x 55 (inc hands) HW041

All items are available in **22** colours & **3** metallics!

NEW



House, mantle clock
Size: 195 x 150 x 60 HW044

NEW



19:30, mantle clock
Size: 300 x 130 x 40 (inc hands) HW043

NEW

It's Around One, mantle clock
Size: 140 x 65 (inc hands) HW042



NEW

lighting



NEW LIGHTING
DESIGNS FOR 2022
see 2022 supplement

Eclipse lamp

Beautifully atmospheric mood lamp. With quality brass fittings. Pictured in gold and copper colour finish.

Size: Base 23 x 250 x 95

HW045



NEW

NEW BOBBIN LAMP
DESIGNS FOR 2022
see 2022 supplement

Bobbin lamp

With handmade shade. Low energy bulb included.

Size: 170 x 135

HW047

**Discount scheme**

Orders between £250
and £449.99 will receive a
5% discount. While orders of
£450 or more will benefit
from a 10% discount.
Order values ex VAT.

**Shady, table lamp**

With quality brass fittings.
Available with or without
a shade. Pictured here
with a 30cm shade.

Size: Base 210 x 25

HW033

lighting



Bipod, table lamp
With quality brass fittings.
Available with or without a shade.
Pictured here with a 20cm shade.
Size: Base 220 x 160 x 160 HW034



Archie, feature lamp
With quality brass fittings,
Archie comes with an 'Edison'
style 40w filament bulb.
Size: 220 x 130 dia

HW036

Eddy, feature lamp
With quality brass fittings, Eddy
comes with an 'Edison' style
40w filament bulb.
Size: 230 x 128 x 128
HW0035



ALL ITEMS ALSO
AVAILABLE IN OAK
see page 20

NEW mirrors



C-You, wall mirror
All the better to see
you with.
Size: Mirror 250 dia
Frame 310 x 25
HW049

All
items are
available in
22 colours &
3 metallics!



Looking Good, dressing table mirror
With recess for nick nacks.
Size: Mirror 200 x 150
Base 165 dia HW048

Shelfie, mirror + shelf
Use freestanding or
hung on the wall.
Size: Mirror 250 dia
Frame 310 x 25
Shelf 260 x 90 HW050



“Humblewood's products are immaculately finished with a great eye for design. And with a wide price range, they are always popular with our customers.”

Josie Beszant,
Masham Gallery,
North Yorkshire

vases



Leaning posy vase
 Size: 44 x 130
 Insert: 16 dia x 100 HW005



In-the-round, table centre
 Size: 170 x 110
 Inserts: 38 dia x 100 HW007



ALL ITEMS ALSO AVAILABLE IN OAK see page 20



All-in-a-row, vase (small)
 Size: 160 x 44 x 110
 Inserts: 16 dia x 100 HW001



All-in-a-row, vase (large)
 Size: 190 x 56 x 113
 Inserts: 38 dia x 100 HW002



BEST SELLER!

Fridge magnet posy vase
 Size: 32 x 32 x 75
 Insert: 12.5 dia x 75 HW006



Five-in-a-row, vase (small)
 Size: 250 x 44 x 110
 Inserts: 16 dia x 100 HW003



Five-in-a-row, vase (large)
 Size: 300 x 56 x 113
 Inserts: 38 dia x 100 HW004

All items are available in 22 colours & 3 metallics!



Fridge magnet posy vase starter set
 Size: 32 x 32 x 75 Insert: 12.5 dia x 75
 Set of 28 + POS: HW006/s

kitchen & serving

Our range of kitchen wares proved very popular when we first introduced it, so for 2021 we've extended it! And we now take requests for bespoke sizes too 😊

**NEW BOARD
DESIGN FOR 2022**
see 2022 supplement

Mini Chop, chopping board
Size: 190 dia x 25 HW028



**ALL ITEMS ALSO
AVAILABLE IN OAK**
see page 20

Chop-Chop, chopping board
Size: 270 dia x 30 HW020



NEW

Hearty Serving, chopping board
Size: 300 x 270 x 30 HW051



Mini Heart, chopping board
Size: 230 x 210 x 25 HW052



All items are available in **22** colours & **3** metallics!

“Humblewood products are colourful, unusual and beautifully made – a firm favourite with my customers!”

Mo McLeod, Rickshaw, Malton



Are-you-being-served, platter
Size: 450 x 150 x 25 HW023

Pinch, seasoning / dip bowls
Supplied with glass bowls.
Size: 150 x 80 x 30 HW019



kitchen & serving

Some of our new kitchen ware products include ceramic bowls from the 'Porcelite®' range of high quality, tableware. Porcelite® is widely-used in the hotel and catering industry and is microwave and dishwasher safe. Our wooden products can be supplied without the bowls* for those who already have a supplier of Porcelite®.

*Please enquire about pricing.
Porcelite is a trademark of GT Design (Ceramic) Ltd.

Trip-Dip, side dish bowls
Supplied with / without bowls.
Size: 55 x 295 x 100 HW060



Sushi serving platter
Supplied with / without bowl.
Chopsticks not included!
Size: 500 x 150 x 25 HW059

Snug, cut out chopping board
Dish not supplied.
Size:
Board 310 x 280 x 25
Depth under 35
HW062

Note the curve is made to fit a 230mm / 9" bowl, or a larger plate can be slipped underneath. Custom sizes on request.



Baker, bread roll basket
Size: 265 x 195 x 110
HW061



Little Cheese, cheese board
Size: 280 x 220 x 25 HW022

Big Cheese, cheese board
Size: 400 x 300 x 25 HW021



All items are available in 22 colours & 3 metallics!

kitchen & serving



Dollop, honey dripper
Size: 135 x 20 HW056

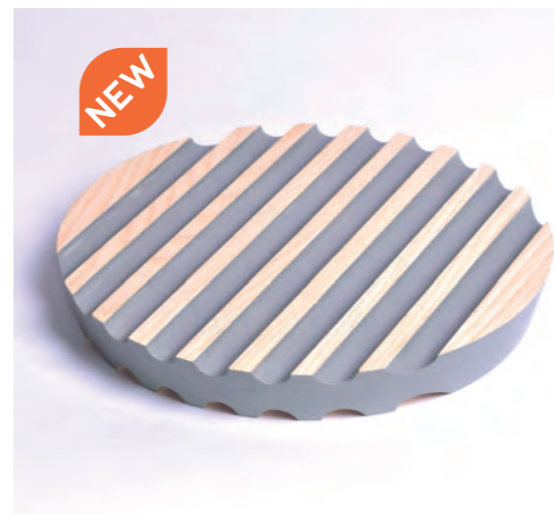
NEW



Boaty, serviette boat
Size: 150 x 180 x 100 HW063

NEW

All items are available in 22 colours & 3 metallics!



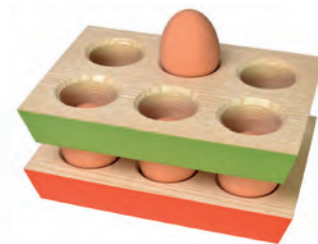
Panny, trivet / dish stand
Size: 180 x 25 HW054

NEW



Layer, stackable egg stand
Sold singly.
Size: 10 x 130 x 30 HW053

NEW



Little Helper, junior rolling pin
Size: 250 x 32 HW064

NEW

Roly, rolling pin
Size: 360 x 40 HW055



NEW

Poly, dough scraper
Size: 150 x 95 x 12 HW065

Need something in a bespoke size? Just ask!



Hearty, eggcup
Just the thing for a hearty breakfast! Size: 100 x 90 x 30 HW027

NEW

Moppit, kitchen roll stand
Size: 260 x 135 HW057



NEW

HumbleOak

for those who prefer a more understated, classic look

Following the successful introduction of a selection of products in unpainted Oak, we're delighted to announce that any of our items can now be ordered in this classic hardwood.

Prices are the same as for our painted ash versions.

ALL ITEMS NOW
AVAILABLE IN
UNPAINTED OAK



Five-too clock - Oak

Size: 340 x 35 (inc hands)

HW011-O



Wonky clock - Oak

Size: 120 x 38 x 80

HW009-O



Shady lamp base - Oak

With quality brass fittings. Available with or without a shade. Pictured here with a 30cm shade.
Size: Base 210 x 25

HW033-O



Chop-chop, chopping board - Oak

Size: 270 dia x 30

HW020-O



In-a-row vase (large) - Oak

Size: 190 x 56 x 113. Inserts: 38 dia x 100

HW002-O

accessories

All items are available in 22 colours & 3 metallics!

ALL ITEMS ALSO AVAILABLE IN OAK see page 20



Drinkup, drinks coasters
In single or multi-colour sets of 4.
Size: 100 x 100 x 12 (each) HW018

“Humblewood strikes perfectly the balance between traditional craftsmanship and modern design. Gorgeous quality products and great service; Bob is a joy to work with.”

Kate Tompsett
Happy & Glorious,
Cranbrook, Kent

**Peggy, coat rack**

Available in single or multi-colour versions, with 3 or 5 pegs.

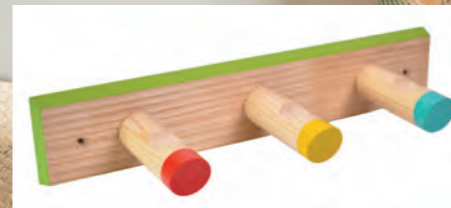
Sizes:

3 peg: 300 x 56 x 95

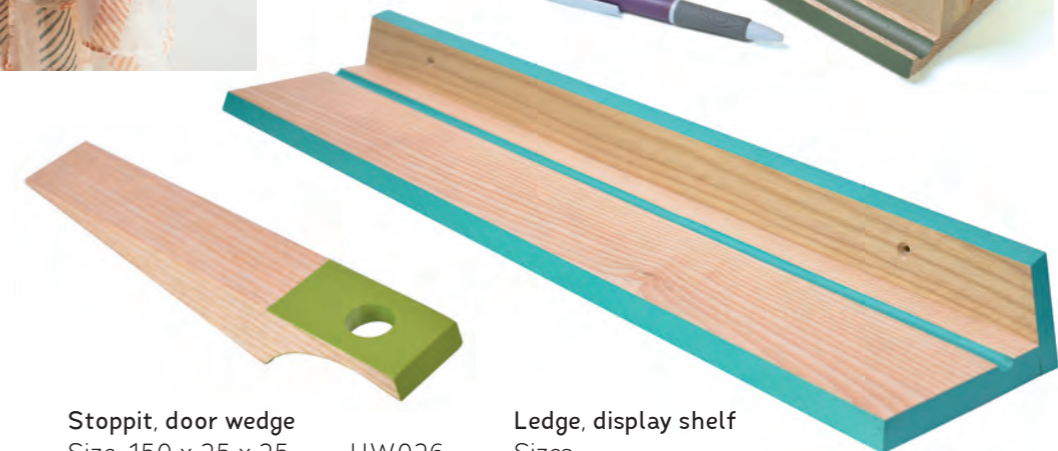
HW030/3

5 peg: 480 x 56 x 95

HW030/5

**Keyper, key rack**

Available in single or multi-colour versions. Size: 140 x 44 x 44 HW031

**Stoppit, door wedge**

Size: 150 x 25 x 25 HW026

Ledge, display shelf

Sizes:

300 x 130 x 56 HW032/3

600 x 130 x 56 HW032/6



NEW

Libby, book slope

Is it a shelf, or a single-handed bookend... You decide 😊

Size: 210 x 350 x 145

HW058

RSVP, letter rack

Perfect for pigeon post!

Size: 120 x 260 x 85

HW037

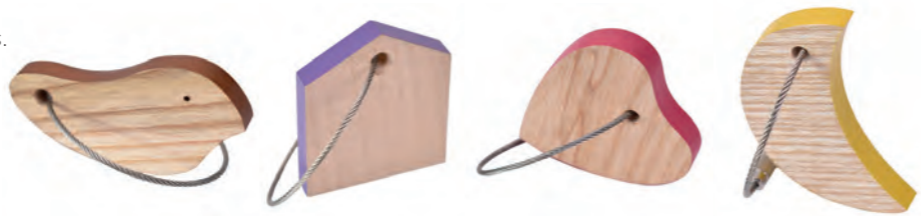


smalls

Discount scheme
 Orders between £250 and £449.99 will receive a 5% discount. While orders of £450 or more will benefit from a 10% discount.
 Order values ex VAT.



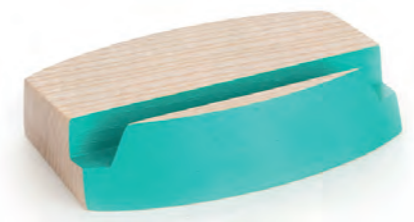
On-a-wire keyrings
 In Bird, House, Heart and Moon shapes.
 Sizes vary. HW014-017



All items are available in **22** colours & **3** metallics!



iTab, tablet stand
 Size: 125 x 90 x 25 Slot: 12 x 12
 HW013



iSmart, phone stand
 Size: 95 x 75 x 25 Slot: 10 x 10
 HW012



Sudzy, soap dish
 Size: 100 x 80 x 20
 HW039

Fun fact: Some of our products have been developed from suggestions by our retailers. So if you want something special that you can't find anywhere else, give us a try!



Large hand-rolled beeswax tea light on heart-shaped stand
 Size: 100 x 90 x 20
 Tea light: 40 x 30
 HW024



Large hand-rolled beeswax tea light on moon-shaped stand
 Size: 100 x 60 x 20
 Tea light: 40 x 30
 HW038



3 Hand-rolled beeswax tea lights on rectangular stand
 Size: 164 x 56 x 15
 Tea lights: 35 dia x 30
 HW025

Choice of Red, Ivory or Green wax



sit!

Bertie, a fun-sized 3-legged stool
 Solid ash hardwood with 100% wool felt or painted seat top. Felt colours shown below.
 Seat: 210 dia x 30 Height: 230 HF001



More colours = more fun!

Our cute Bertie stools are now available in multi-colour versions. **Rainbow Berties** can be ordered in any colour combination – some examples are shown below. Pricing is the same as for our regular Berties.



All stools are available in any combination of our wide range of painted colours

See page 29 for our paint colour options



Benni, a stylish 3-legged stool for grown-ups
 Solid ash hardwood with 100% wool felt or painted seat top.
 Seat: 270 dia x 30 Height: 500 HF002

Felt colours
 Our bright felt range comes in these colours: Orange, Yellow, Pink, Lime, Red, Blue

In addition we have more subtle shades available in a range of browns, greys and black. Samples are available on request.

Humblewood are...

... designer-maker **Bob** and sister **Eunice**, who is in charge of painting and finishing (and much else too!), plus **Barney** who mostly lies in just the wrong place and sheds way too much hair.

Working in our tiny rural workshop, we design and make a range of home accessories and gift items. Featuring a dash of eco-friendly colour, our home and gift wares ooze with a retro-inspired personality.

Using sustainably-sourced native hardwoods, we hand-craft our products in small batches using traditional tools and methods - no computer-driven machinery here! Finishing is all done by hand too, using only non-toxic materials. The timber we use is sourced locally, as far as possible from windblown or dead trees.

Our main design influences are the clean, clear lines of contemporary Nordic and mid-century modern styles. But we have worked hard to develop our own designs with their uniquely playful sense of style, while still being useful, practical items (and, of course, a wee dash of colourful quirkiness never goes amiss!).

Our current range consists of products ranging from key rings to clocks, vases, lamps and stools, with everything available in a range of 22 colours and three metallics. We have no minimum order requirement and our carriage paid value is just £100. We also run a discount scheme for larger orders.



Discount scheme
 Orders between £250 and £449.99 will receive a 5% discount. While orders of £450 or more will benefit from a 10% discount.
 Order values ex VAT.

Design

Quality design is as much to do with functionality as it is about creating good looks. So while a little quirky, our products are all made to be used and enjoyed.

Finishing

All items are individually hand-crafted and finished in Britain by real human beings. The eco-friendly colours are applied by hand and protected with a hard wearing water-based varnish. Where polishes or oils are used, they are made from natural substances. Clocks are completed with a quality quartz movement and come with a fresh battery. Vases are supplied with glass inserts.

Sustainability

Our choice of materials and working methods always has an eye on ensuring we are as planet-friendly as possible. The hardwoods we work with are sustainably sourced from within the UK. We are members of the Woodland Trust and Woodland Heritage, and donate to tree planting schemes. As far as possible, our packaging is recyclable.



Humblewood colours

All items are available in 22 colours & 3 metallics!

Choices, choices, choices...

All our items are available in any of the following colours. Choose from subtle pastels, strong classics, in-your-face brights or stylish metallics.

You want more..?

We are happy to supply our products in your choice of bespoke colour. If we can get the paint, you can have it! Minimum order of £100 per special colour.

Pastels

Sweet and contemporary 'Sugared Almond' pastels

- Blush
- Vanilla
- Primrose
- Mint
- Sky
- Coffee
- Cloudy

Classics

Refined colours, for a timeless, classic look

- Pinkness
- Oriental Red
- Mustard
- Adam Green
- Ocean Blue
- Heather
- Grey

Metallics

For a little heavy metal

- Copper
- Gold
- Silver

Brights

In-your-face colours with a fresh, vibrant feel

- Happy Pink
- Flame
- Yellow
- Lime
- Turquoise
- Blue
- Purple
- NEW COLOUR** Pumpkin

Colours are an approximation due to the limitations of the printing process.

ordering & trade terms

- **No minimum order**

Our minimum order is... One. That's right, if you only want to order one item, you can. We'll be disappointed, of course, and we do think you'll need more than that on your shelves, but we won't hold it against you!

- **Discount scheme**

Orders between £250 and £449.99 will receive a 5% discount. While orders of £450 or more will benefit from a 10% discount. (order values ex VAT)

- **Minimum quantities**

The only minimum we suggest, is for the fridge magnet vases, simply because they're such good sellers. If you order our suggested starter set of 28, we supply a retail display stand for them. Subsequent top-up orders can be for any amount.

- **Carriage paid minimum order**

The minimum spend to qualify for free UK delivery is £100 for small goods or £250 for furniture items.

- **Carriage costs**

Delivery costs on orders below £100 are charged at a flat £5. Delivery is made by either next day courier or first class post. Note that we reuse packaging wherever possible to keep waste to a minimum. We do not surcharge for Highlands and Islands.

- **VAT**

VAT will be charged on UK orders at the rate prevailing at the time of invoicing.

- **Payment terms**

For an initial order, we ask for payment in full before dispatch of goods. For subsequent orders, our payment terms are 30 days from invoice date.

- **Lead time**

We try to keep some stock to hand, but as our items are handmade in small batches, please allow up to three weeks for delivery. The current time-scale will be advised upon enquiry.

- **How to order**

Orders can simply be emailed to us. We do not accept telephone orders without confirmation in writing.

- **Damages and returns policy**

Any damage caused to stock during delivery must be notified in writing within 3 working days of receipt. Such stock should be returned to us for replacement. Postage costs will be credited.

- **Full terms and conditions**

are available on our website:

humblewood.uk/terms-wholesale.html

Please note that we do not export outside the UK



to say hi, you can...

fire off an email:
trade@humblewood.uk

call Bob:
077400 76173

link up on social media:
[@humblewoodUK](https://www.instagram.com/humblewoodUK)

drop us a line:
**1 Strutt Green, Hartley,
Kirkby Stephen,
Cumbria CA17 4JH**

or just browse our website:
humblewood.uk

Please note that we do not export outside the UK



unique home accessories & gifts
handmade in Britain



THAT'S ALL FOLKS!

Humblewood

FINISHING TOUCHES



unique home accessories & gifts
handmade in Britain



Good photography by forevercreativephotography.co.uk · Not-so-good photography by Bob!
Colours shown are an approximation due to the limitations of the printing process.
Design & Print: bcreative · All designs ©humblewood · This edition issued April 2022 · E&OE

All intellectual property rights are and will remain the property of R J Bryant, t/a Humblewood (humblewood.uk). Any infringements will be taken seriously.

Any prices referred to are ex VAT. Sizes in mm and are approximate. Images not to scale. Designs © Humblewood. E&OE

TRADE CATALOGUE - 2022 SUPPLEMENT



**Big Time,
square wall clock**
Size: 360 x 360 x 35
(inc hands) HW066



NO MINIMUM ORDER · UK CARRIAGE PAID: £100

Hi-light, display lamp
 Supplied with a handmade 200mm shade in a range of plain colours. Lamp base shown here in Oak.
 Size: Overall 400 x 200 x 210 HW069

NEW FOR '22



Glass Mini Rainbow Curve
 by Dragonfly Dichroic
<https://www.dragonflydichroic.com>



Cross-legged lamp
 Available with or without a handmade 300mm plain colour shade. Lamp base shown here in Oak.
 Size: Base 250 x 200 HW070



Tripod lamp
 Supplied with a handmade 200mm shade in a range of plain colours.
 Size: Overall 380 x 210 x 210 HW071

NEW FOR '22



Bobbin lamp with Dino shade

NEW FOR '22

Bobbin lamp
 With handmade shade - now available in the three patterns shown, as well as a range of plain colours.
 Available mains powered with low energy bulb included, or with battery powered LED light.
 Size: 170 x 135 HW047



Bobbin lamp with Fox shade



Bobbin lamp with Constellation shade

Full-board, chopping board

Size: 420 x 280 x 30

HW067



unique home accessories & gifts
handmade in Britain

fire off an email: trade@humblewood.uk

call Bob: 077400 76173

link up on social media: [@humblewoodUK](https://www.instagram.com/humblewoodUK)

drop us a line:

**1 Strutt Green, Hartley,
Kirkby Stephen, Cumbria CA17 4JH**

or just browse our website:

[humblewood.uk](https://www.humblewood.uk)

Please note that we do not export outside the UK

**Half-board,
chopping board**

Size: 300 x 200 x 25

HW068



Colours shown are an approximation due to the limitations of the printing process.
Design & Print: bcreative · All designs ©humblewood · This edition issued April 2022 · E&OE

All intellectual property rights are and will remain the property of R J Bryant, t/a Humblewood (humblewood.uk).
Any infringements will be taken seriously.